

## Standardzylinderbauteile - Kolbenstangen verchromt - Meterware - Stangen-Ø 16-60 mm

Alle Kolbenstangen sind hartverchromt f7 mm

Material: 20 Mn V6

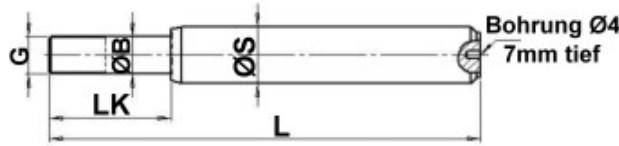
Oberfläche: Ra max. 0,25 µ

Schichtdicke: 25+/-5 µm

| Artikelnr. | Kolbenstangen-Ø |
|------------|-----------------|
|            | mm              |
| STG16      | 16              |
| STG20      | 20              |
| STG25      | 25              |
| STG30      | 30              |
| STG35      | 35              |
| STG40      | 40              |
| STG45      | 45              |
| STG50      | 50              |
| STG55      | 55              |
| STG60      | 60              |

Auf Anfrage auch andere Stangendurchmesser erhältlich.

Standardzylinderbauteile - Kolbenstangen verchromt - Stangen-Ø 20-35 mm



**Stangen-Ø 20 mm**

|          |    |          |         |
|----------|----|----------|---------|
| ØS [mm]: | 20 | G:       | M14x1,5 |
| ØB [mm]: | 15 | LK [mm]: | 58      |

| Artikelnr. | L   | Hub |
|------------|-----|-----|
|            | mm  | mm  |
| KS20220    | 220 | 100 |
| KS20270    | 270 | 150 |
| KS20320    | 320 | 200 |
| KS20370    | 370 | 250 |
| KS20420    | 420 | 300 |
| KS20470    | 470 | 350 |
| KS20520    | 520 | 400 |
| KS20570    | 570 | 450 |

| Artikelnr. | L    | Hub  |
|------------|------|------|
|            | mm   | mm   |
| KS20620    | 620  | 500  |
| KS20670    | 670  | 550  |
| KS20720    | 720  | 600  |
| KS20770    | 770  | 650  |
| KS20820    | 820  | 700  |
| KS20920    | 920  | 800  |
| KS201020   | 1020 | 900  |
| KS201120   | 1120 | 1000 |

**Stangen-Ø 25 mm**

|          |    |          |         |
|----------|----|----------|---------|
| ØS [mm]: | 25 | G:       | M14x1,5 |
| ØB [mm]: | 15 | LK [mm]: | 58      |

| Artikelnr. | L   | Hub |
|------------|-----|-----|
|            | mm  | mm  |
| KS25220    | 220 | 100 |
| KS25270    | 270 | 150 |
| KS25320    | 320 | 200 |
| KS25370    | 370 | 250 |
| KS25420    | 420 | 300 |
| KS25470    | 470 | 350 |
| KS25520    | 520 | 400 |
| KS25570    | 570 | 450 |

| Artikelnr. | L    | Hub  |
|------------|------|------|
|            | mm   | mm   |
| KS25620    | 620  | 500  |
| KS25670    | 670  | 550  |
| KS25720    | 720  | 600  |
| KS25770    | 770  | 650  |
| KS25820    | 820  | 700  |
| KS25920    | 920  | 800  |
| KS251020   | 1020 | 900  |
| KS251120   | 1120 | 1000 |

**Stangen-Ø 25 mm**

|          |    |          |         |
|----------|----|----------|---------|
| ØS [mm]: | 25 | G:       | M20x1,5 |
| ØB [mm]: | 20 | LK [mm]: | 65      |

| Artikelnr. | L   | Hub |
|------------|-----|-----|
|            | mm  | mm  |
| KS25230    | 230 | 100 |
| KS25280    | 280 | 150 |
| KS25330    | 330 | 200 |
| KS25380    | 380 | 250 |
| KS25430    | 430 | 300 |
| KS25480    | 480 | 350 |
| KS25530    | 530 | 400 |
| KS25580    | 580 | 450 |

| Artikelnr. | L    | Hub  |
|------------|------|------|
|            | mm   | mm   |
| KS25630    | 630  | 500  |
| KS25680    | 680  | 550  |
| KS25730    | 730  | 600  |
| KS25780    | 780  | 650  |
| KS25830    | 830  | 700  |
| KS25930    | 930  | 800  |
| KS251030   | 1030 | 900  |
| KS251130   | 1130 | 1000 |

**Stangen-Ø 30 mm**

|          |    |          |         |
|----------|----|----------|---------|
| ØS [mm]: | 30 | G:       | M20x1,5 |
| ØB [mm]: | 20 | LK [mm]: | 65      |

| Artikelnr. | L   | Hub |
|------------|-----|-----|
|            | mm  | mm  |
| KS30230    | 230 | 100 |
| KS30280    | 280 | 150 |
| KS30330    | 330 | 200 |
| KS30380    | 380 | 250 |
| KS30430    | 430 | 300 |
| KS30480    | 480 | 350 |
| KS30530    | 530 | 400 |
| KS30580    | 580 | 450 |

| Artikelnr. | L   | Hub |
|------------|-----|-----|
|            | mm  | mm  |
| KS30630    | 230 | 100 |
| KS30680    | 280 | 150 |
| KS30730    | 330 | 200 |
| KS30780    | 380 | 250 |
| KS30830    | 430 | 300 |
| KS30930    | 480 | 350 |
| KS301030   | 530 | 400 |
| KS301130   | 580 | 450 |

**Stangen-Ø 30 mm**

|          |    |          |         |
|----------|----|----------|---------|
| ØS [mm]: | 30 | G:       | M24x1,5 |
| ØB [mm]: | 24 | LK [mm]: | 75      |

| Artikelnr. | L   | Hub |
|------------|-----|-----|
|            | mm  | mm  |
| KS30248    | 248 | 100 |
| KS30298    | 298 | 150 |
| KS30348    | 348 | 200 |
| KS30398    | 398 | 250 |
| KS30448    | 448 | 300 |
| KS30498    | 498 | 350 |
| KS30548    | 548 | 400 |
| KS30598    | 598 | 450 |

| Artikelnr. | L   | Hub |
|------------|-----|-----|
|            | mm  | mm  |
| KS30648    | 248 | 100 |
| KS30698    | 298 | 150 |
| KS30748    | 348 | 200 |
| KS30798    | 398 | 250 |
| KS30848    | 448 | 300 |
| KS30948    | 498 | 350 |
| KS301048   | 548 | 400 |
| KS301148   | 598 | 450 |

**Stangen-Ø 35 mm**

|          |    |          |         |
|----------|----|----------|---------|
| ØS [mm]: | 35 | G:       | M24x1,5 |
| ØB [mm]: | 24 | LK [mm]: | 75      |

| Artikelnr. | L   | Hub |
|------------|-----|-----|
|            | mm  | mm  |
| KS35248    | 248 | 100 |
| KS35298    | 298 | 150 |
| KS35348    | 348 | 200 |
| KS35398    | 398 | 250 |
| KS35448    | 448 | 300 |
| KS35498    | 498 | 350 |
| KS35548    | 548 | 400 |
| KS35598    | 598 | 450 |

| Artikelnr. | L   | Hub |
|------------|-----|-----|
|            | mm  | mm  |
| KS35648    | 248 | 100 |
| KS35698    | 298 | 150 |
| KS35748    | 348 | 200 |
| KS35798    | 398 | 250 |
| KS35848    | 448 | 300 |
| KS35948    | 498 | 350 |
| KS351048   | 548 | 400 |
| KS351148   | 598 | 450 |

## Standardzylinderbauteile - Kolbenstangen verchromt - Stangen-Ø 35-60 mm



### Stangen-Ø 35 mm

|          |    |          |       |
|----------|----|----------|-------|
| ØS [mm]: | 35 | G:       | M27x2 |
| ØB [mm]: | 27 | LK [mm]: | 83    |

| Artikelnr. | L   | Hub |
|------------|-----|-----|
|            | mm  | mm  |
| KS35268    | 268 | 100 |
| KS35318    | 318 | 150 |
| KS35368    | 368 | 200 |
| KS35418    | 418 | 250 |
| KS35468    | 468 | 300 |
| KS35518    | 518 | 350 |
| KS35568    | 568 | 400 |
| KS35618    | 618 | 450 |

| Artikelnr. | L    | Hub  |
|------------|------|------|
|            | mm   | mm   |
| KS35668    | 668  | 500  |
| KS35718    | 718  | 550  |
| KS35768    | 768  | 600  |
| KS35818    | 818  | 650  |
| KS35868    | 868  | 700  |
| KS35968    | 968  | 800  |
| KS351068   | 1068 | 900  |
| KS351168   | 1168 | 1000 |

### Stangen-Ø 40 mm

|          |    |          |         |
|----------|----|----------|---------|
| ØS [mm]: | 40 | G:       | M24x1,5 |
| ØB [mm]: | 24 | LK [mm]: | 75      |

| Artikelnr. | L   | Hub |
|------------|-----|-----|
|            | mm  | mm  |
| KS40248    | 248 | 100 |
| KS40298    | 298 | 150 |
| KS40348    | 348 | 200 |
| KS40398    | 398 | 250 |
| KS40448    | 448 | 300 |
| KS40498    | 498 | 350 |
| KS40548    | 548 | 400 |
| KS40598    | 598 | 450 |

| Artikelnr. | L    | Hub  |
|------------|------|------|
|            | mm   | mm   |
| KS40648    | 648  | 500  |
| KS40698    | 698  | 550  |
| KS40748    | 748  | 600  |
| KS40798    | 798  | 650  |
| KS40848    | 848  | 700  |
| KS40948    | 948  | 800  |
| KS401048   | 1048 | 900  |
| KS401148   | 1148 | 1000 |

### Stangen-Ø 40 mm

|          |    |          |       |
|----------|----|----------|-------|
| ØS [mm]: | 40 | G:       | M27x2 |
| ØB [mm]: | 27 | LK [mm]: | 83    |

| Artikelnr. | L   | Hub |
|------------|-----|-----|
|            | mm  | mm  |
| KS40268    | 268 | 100 |
| KS40318    | 318 | 150 |
| KS40368    | 368 | 200 |
| KS40418    | 418 | 250 |
| KS40468    | 468 | 300 |
| KS40518    | 518 | 350 |
| KS40568    | 568 | 400 |
| KS40618    | 618 | 450 |

| Artikelnr. | L    | Hub  |
|------------|------|------|
|            | mm   | mm   |
| KS40668    | 668  | 500  |
| KS40718    | 718  | 550  |
| KS40768    | 768  | 600  |
| KS40818    | 818  | 650  |
| KS40868    | 868  | 700  |
| KS40968    | 968  | 800  |
| KS401068   | 1068 | 900  |
| KS401168   | 1168 | 1000 |

### Stangen-Ø 50 mm

|          |    |          |       |
|----------|----|----------|-------|
| ØS [mm]: | 50 | G:       | M27x2 |
| ØB [mm]: | 27 | LK [mm]: | 83    |

| Artikelnr. | L   | Hub |
|------------|-----|-----|
|            | mm  | mm  |
| KS50268    | 268 | 100 |
| KS50318    | 318 | 150 |
| KS50368    | 368 | 200 |
| KS50418    | 418 | 250 |
| KS50468    | 468 | 300 |
| KS50518    | 518 | 350 |
| KS50568    | 568 | 400 |
| KS50618    | 618 | 450 |

| Artikelnr. | L    | Hub  |
|------------|------|------|
|            | mm   | mm   |
| KS50668    | 668  | 500  |
| KS50718    | 718  | 550  |
| KS50768    | 768  | 600  |
| KS50818    | 818  | 650  |
| KS50868    | 868  | 700  |
| KS50968    | 968  | 800  |
| KS501068   | 1068 | 900  |
| KS501168   | 1168 | 1000 |

### Stangen-Ø 50 mm

|          |    |          |       |
|----------|----|----------|-------|
| ØS [mm]: | 50 | G:       | M33x2 |
| ØB [mm]: | 33 | LK [mm]: | 70    |

| Artikelnr. | L   | Hub |
|------------|-----|-----|
|            | mm  | mm  |
| KS50295    | 295 | 100 |
| KS50345    | 345 | 150 |
| KS50395    | 395 | 200 |
| KS50445    | 445 | 250 |
| KS50495    | 495 | 300 |
| KS50545    | 545 | 350 |
| KS50595    | 595 | 400 |
| KS50645    | 645 | 450 |

| Artikelnr. | L    | Hub  |
|------------|------|------|
|            | mm   | mm   |
| KS50695    | 695  | 500  |
| KS50745    | 745  | 550  |
| KS50795    | 795  | 600  |
| KS50845    | 845  | 650  |
| KS50895    | 895  | 700  |
| KS50995    | 995  | 800  |
| KS501095   | 1095 | 900  |
| KS501195   | 1195 | 1000 |

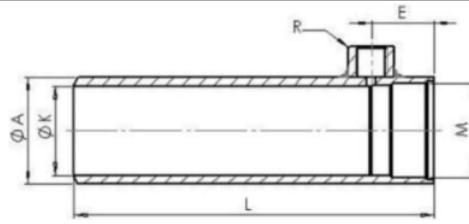
### Stangen-Ø 60 mm

|          |    |          |       |
|----------|----|----------|-------|
| ØS [mm]: | 60 | G:       | M33x2 |
| ØB [mm]: | 33 | LK [mm]: | 88    |

| Artikelnr. | L   | Hub |
|------------|-----|-----|
|            | mm  | mm  |
| KS60295    | 295 | 100 |
| KS60345    | 345 | 150 |
| KS60395    | 395 | 200 |
| KS60445    | 445 | 250 |
| KS60495    | 495 | 300 |
| KS60545    | 545 | 350 |
| KS60595    | 595 | 400 |
| KS60645    | 645 | 450 |

| Artikelnr. | L    | Hub  |
|------------|------|------|
|            | mm   | mm   |
| KS60695    | 695  | 500  |
| KS60745    | 745  | 550  |
| KS60795    | 795  | 600  |
| KS60845    | 845  | 650  |
| KS60895    | 895  | 700  |
| KS60995    | 995  | 800  |
| KS601095   | 1095 | 900  |
| KS601195   | 1195 | 1000 |

Standardzylinderbauteile - Zylinderrohre - Außen-Ø 42-60 mm



**Außen-Ø 42 mm**

|          |         |           |      |
|----------|---------|-----------|------|
| ØA [mm]: | 42      | E [mm]:   | 32   |
| ØK [mm]: | 32      | R [Zoll]: | G1/4 |
| M:       | M36x1,5 |           |      |

| Artikelnr. | L   | Hub |
|------------|-----|-----|
|            | mm  | mm  |
| R42192     | 192 | 100 |
| R42242     | 242 | 150 |
| R42292     | 292 | 200 |
| R42342     | 342 | 250 |
| R42392     | 392 | 300 |
| R42442     | 442 | 350 |

| Artikelnr. | L   | Hub |
|------------|-----|-----|
|            | mm  | mm  |
| R42492     | 492 | 400 |
| R42542     | 542 | 450 |
| R42592     | 592 | 500 |
| R42642     | 642 | 550 |
| R42692     | 692 | 600 |

**Außen-Ø 45 mm**

|          |         |           |      |
|----------|---------|-----------|------|
| ØA [mm]: | 45      | E [mm]:   | 32   |
| ØK [mm]: | 35      | R [Zoll]: | G1/4 |
| M:       | M39x1,5 |           |      |

| Artikelnr. | L   | Hub |
|------------|-----|-----|
|            | mm  | mm  |
| R45192     | 192 | 100 |
| R45242     | 242 | 150 |
| R45292     | 292 | 200 |
| R45342     | 342 | 250 |
| R45392     | 392 | 300 |
| R45442     | 442 | 350 |
| R45492     | 492 | 400 |
| R45542     | 542 | 450 |

| Artikelnr. | L    | Hub  |
|------------|------|------|
|            | mm   | mm   |
| R45592     | 592  | 500  |
| R45642     | 642  | 550  |
| R45692     | 692  | 600  |
| R45742     | 742  | 650  |
| R45792     | 792  | 700  |
| R45892     | 892  | 800  |
| R45992     | 992  | 900  |
| R451092    | 1092 | 1000 |

**Außen-Ø 50 mm**

|          |         |           |      |
|----------|---------|-----------|------|
| ØA [mm]: | 50      | E [mm]:   | 32   |
| ØK [mm]: | 40      | R [Zoll]: | G1/4 |
| M:       | M44x1,5 |           |      |

| Artikelnr. | L   | Hub |
|------------|-----|-----|
|            | mm  | mm  |
| R50192     | 192 | 100 |
| R50242     | 242 | 150 |
| R50292     | 292 | 200 |
| R50342     | 342 | 250 |
| R50392     | 392 | 300 |
| R50442     | 442 | 350 |
| R50492     | 492 | 400 |
| R50542     | 542 | 450 |
| R50592     | 592 | 500 |

| Artikelnr. | L    | Hub  |
|------------|------|------|
|            | mm   | mm   |
| R50642     | 642  | 550  |
| R50692     | 692  | 600  |
| R50742     | 742  | 650  |
| R50792     | 792  | 700  |
| R50892     | 892  | 800  |
| R50992     | 992  | 900  |
| R501092    | 1092 | 1000 |
| R501192    | 1192 | 1100 |

**Außen-Ø 60 mm**

|          |         |           |      |
|----------|---------|-----------|------|
| ØA [mm]: | 60      | E [mm]:   | 35   |
| ØK [mm]: | 50      | R [Zoll]: | G3/8 |
| M:       | M54x1,5 |           |      |

| Artikelnr. | L   | Hub |
|------------|-----|-----|
|            | mm  | mm  |
| R60202     | 202 | 100 |
| R60252     | 252 | 150 |
| R60302     | 302 | 200 |
| R60352     | 352 | 250 |
| R60402     | 402 | 300 |
| R60452     | 452 | 350 |
| R60502     | 502 | 400 |
| R60552     | 552 | 450 |
| R60602     | 602 | 500 |

| Artikelnr. | L    | Hub  |
|------------|------|------|
|            | mm   | mm   |
| R60652     | 652  | 550  |
| R60702     | 702  | 600  |
| R60752     | 752  | 650  |
| R60802     | 802  | 700  |
| R60852     | 852  | 750  |
| R60902     | 902  | 800  |
| R601002    | 1002 | 900  |
| R601102    | 1102 | 1000 |
| R601302    | 1302 | 1200 |