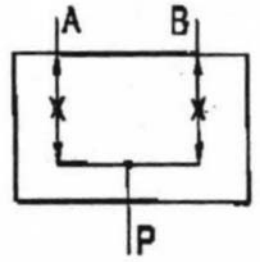
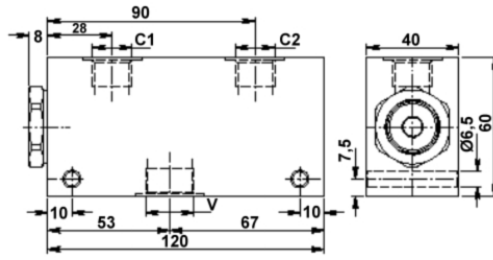


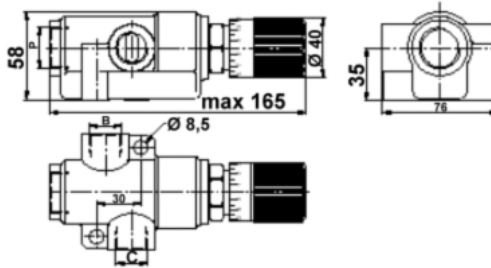
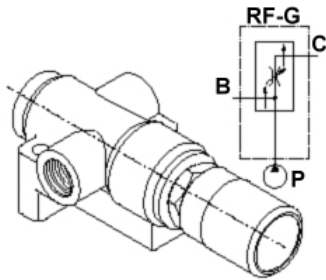
Ventile für Rohrleitungseinbau - Stromteiler - DFR Aluminium- Teilung 50:50



Pmax = 210 bar

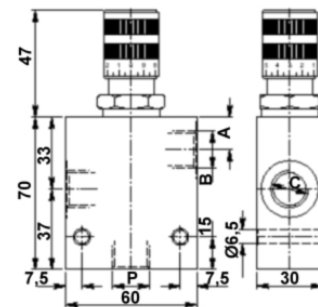
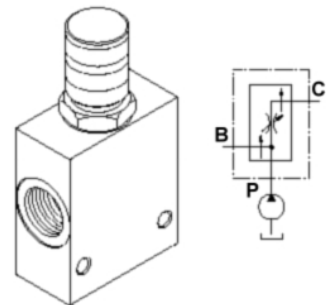
Artikelnr.	max. Durchfluss		Gewinde
	l/min		
RF000066	3-6		3/8" GAS
RF000067	7-12		3/8" GAS
RF000068	13-25		3/8" GAS
RF000070	26-40		1/2" GAS
RF000071	40-70		1/2" GAS

Ventile für Rohrleitungseinbau - Stromregler - RFP



Pmax = 250 bar

Artikelnr.	max. Durchfluss		Gewinde	Gewinde
	in C	in P		
RF000128	50	90	1/2" GAS	3/4" GAS



Artikelnr.	max. Durchfluss		A	Gewinde
	in C	in P		
RF000162	25	50	19 mm	1/2" GAS