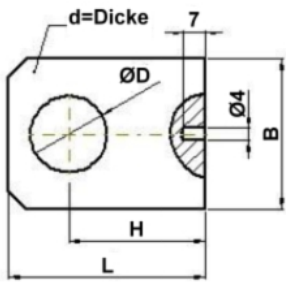
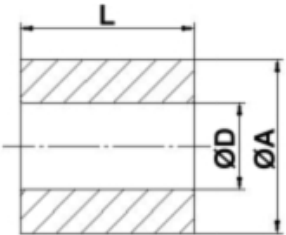


**Befestigungselemente - Anschweißflacheisen**



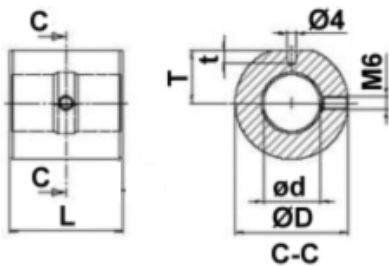
Artikelnr.	ØD mm	d mm	H mm	L mm	B mm	geeignete Kolben-Ø mm
FL16	16,2	15	34	50	35	20 - 32 - 35 - 40
FL20	20,25	20	40	60	40	50 - 55
FL25	25,25	25	45	65	50	60 - 65 - 70
FL30	30,25	30	50	75	60	80 - 90
FL35	35,25	35	55	85	70	100
FL40	40,25	40	60	100	80	125

**Befestigungselemente - Anschweißbuchsen**



Artikelnr.	ØD mm	ØA mm	L mm	geeignete Kolben-Ø mm
163530	16,2	35	30	20 - 32 - 35 - 40
163560	16,2	35	60	20 - 32 - 35 - 40
204040	20,25	40	40	50 - 55
204070	20,25	40	70	50 - 55
255025	25,25	50	25	60 - 63 - 65 - 70
205050	25,25	50	50	60 - 63 - 65 - 70
255080	25,25	50	80	60 - 63 - 65 - 70
255090	25,25	50	90	60 - 63 - 65 - 70
2550110	25,25	50	110	60 - 63 - 65 - 70
306060	30,25	60	60	80 - 90
3060110	30,25	60	110	80 - 90
407070	40,25	70	70	100 - 110 - 120
4070130	40,25	70	130	100 - 110 - 120

**Befestigungselemente - Anschweißbuchsen mit Schmiernippel**



Artikelnr.	Ød mm	ØD mm	L mm	T mm	t mm
163530S	16	35	30	16	6,5
163550S	16	35	50	16	6,5
163560S	16	35	60	16	6,5
204040S	20	40	40	18,5	6,5
204050S	20	40	50	18,5	6,5
204070S	20	40	70	18,5	6,5
255050S	25	50	50	23	7
255060S	25	50	60	23	7
255080S	25	50	80	23	7
306060S	30	60	60	28	7
306070S	30	60	70	28	7
3060100S	30	60	100	28	7
357070S	35	70	70	33	7
3570115S	35	70	115	33	7
408070S	40	80	70	38	7
4080130S	40	80	130	38	7